

TENDER

Para piano y vibráfono

...donde todo parece provenir de un azar con orden propio.

Guido Rivera

octubre 2012

MODO DE EMPLEO:



Las notas deben ejecutarse dentro del tiempo establecido en el paréntesis, respetando los acelerandos y desacelerandos de las barras.



Desacelerando o acelerando de la velocidad del trémolo.

P.T. _____

Pedal tonal.



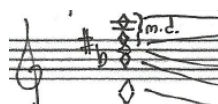
Cierre del pedal tonal.



Cierre del pedal sustain.

m.d.

Mano derecha.



Notas apoyadas (sin sonido). Sin indicación de tiempo. Deben accionarse en el momento más cómodo posible.



Armónico detrás del apagador.



Nota muteada.



Baqueta dura.



Baqueta blanda.



Baqueta intermedia.

$\text{♩} = \text{ca. } 82-88$
Fluido

1

Vibra.

Piano

Vibra.

Piano

Vibra.

Piano

Vibra.

Piano

17

Vibra. *pp* *sf* *pp* *mp*

Piano *F* *pp* *mp* *pp* *sfz* *pp*

Ped *P.T.*

21

Vibra. *pp* *mp* *mf* *mf*

Piano *mp* *pp* *mp* *mf* *mf*

Ped

24

Vibra. *pp* *mp*

Piano *pp* *mf* *sfz*

Ped *P.T.*

29

Vibra. *pp* *pp* *pp* *pp*

Piano *ppp* *pp* *ppp* *pp*

32

Vibra. 1 2

Piano

Handwritten musical score for measures 32-37. The Vibraphone part starts with a first ending bracket (1) and a second ending bracket (2). The Piano part features complex textures with sfz, pp, and mp dynamics. Pedal markings are present throughout.

38

Vibra.

Piano

Handwritten musical score for measures 38-41. The Vibraphone part has a first ending bracket (1) and a second ending bracket (2). The Piano part includes sfz, mp, and pp dynamics. Pedal markings are present.

42

Vibra.

Piano

Handwritten musical score for measures 42-45. The Vibraphone part has a first ending bracket (1) and a second ending bracket (2). The Piano part includes sfz, mp, and pp dynamics. Pedal markings are present.

46

Vibra.

Piano

Handwritten musical score for measures 46-49. The Vibraphone part has a first ending bracket (1) and a second ending bracket (2). The Piano part includes sfz, mp, and pp dynamics. Pedal markings are present.

49

Vibro.

piano

* P.T.

Ped

53

Vibro.

piano

Ped

57

Vibro.

piano

* P.T.

Ped

62

Vibro.

piano

* P.T.

Ped

81

Handwritten musical score for measures 81-85. The system includes a Vibraphone (Vibra.) staff and a Piano staff. The Vibra. staff features a melodic line with a circled triplet of eighth notes in measure 81 and a circled chord in measure 85. The Piano staff has complex accompaniment with circled chords and melodic fragments. Performance markings include *Ped*, *pp*, *mp*, and *ppp*. A circled number '4' is in the top right. A circled '8va' indicates an octave shift. A circled 'c' is also present. A circled 'P.T.' is at the bottom right.

86

Handwritten musical score for measures 86-90. The system includes a Vibraphone (Vibra.) staff and a Piano staff. The Vibra. staff has a melodic line with circled chords and notes. The Piano staff features complex accompaniment with circled chords and melodic fragments. Performance markings include *mp*, *p*, *pp*, and *ppp*. A circled '8va' is present. A circled 'P.T.' is at the bottom right.

91

Handwritten musical score for measures 91-94. The system includes a Vibraphone (Vibra.) staff and a Piano staff. The Vibra. staff has a melodic line with circled chords and notes. The Piano staff features complex accompaniment with circled chords and melodic fragments. Performance markings include *mp*, *p*, *pp*, and *ppp*. A circled '8va' is present. A circled 'P.T.' is at the bottom right.

95

Handwritten musical score for measures 95-98. The system includes a Vibraphone (Vibra.) staff and a Piano staff. The Vibra. staff has a melodic line with circled chords and notes. The Piano staff features complex accompaniment with circled chords and melodic fragments. Performance markings include *pp*, *mp*, and *ppp*. A circled '8va' is present. A circled 'P.T.' is at the bottom left.

101 5

vibra. *pp* *f*

piano *f* *mp* *pp*

Ped

109

vibra. *pp* *mp* *f* *pp*

piano *f* *mp* *pp*

Ped

* *(F p 7.)*

115 9

vibra. *pp* *f* *pp*

piano *pp* *mp* *f*

Ped

* *(F p 7.)*

119 6 9

vibra. *mp* *mf* *f*

piano *mp* *pp* *mf*

Ped

* *(F p 7.)*

126

Vibra

piano

Handwritten musical score for measures 126-131. The Vibra part is on a single staff with notes and dynamic markings (mp, mf, pp, ppp). The piano part is on a grand staff with complex chords and dynamics (f, mf, pp, p, mp). The score includes various musical notations such as slurs, ties, and accidentals.

P.T. _____

132

Vibra

piano

Handwritten musical score for measures 132-137. The Vibra part has a few notes and a "Ped" marking. The piano part has a long sustained chord with a "Ped" marking. A "9 l.v." marking is present above the piano staff. The score ends with a double bar line.